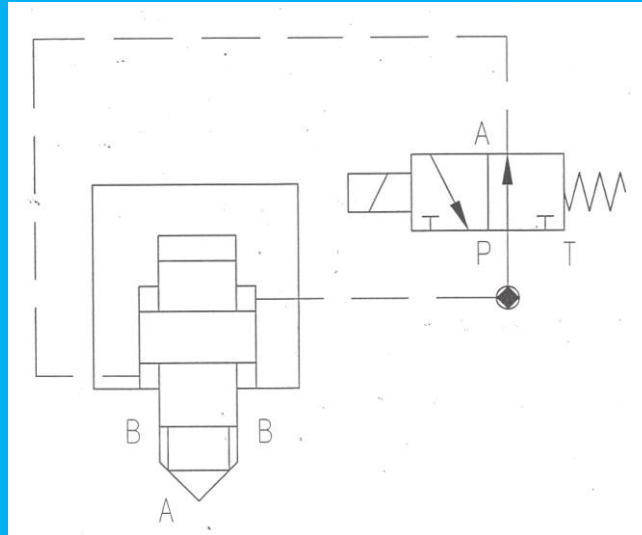


Electric solenoid way 2/2 way valve type WEC bore 10 ... 150mm



Field of application is in hydraulic for on/ off switching of liquid flow rates.

The WEC valve is built up with hydraulic solenoid valve(s), control voltage 24 VDC, 36 W. The restrictor adjustment can be positioned intern or extern via the control card.

Technical data:

Operation medium	Clear water, water with additives, emulsion-fluids, hydraulic oil
Design	Seat/cone, pipeline construction, face mounting, cartridge mounting
Connection	Internal thread or flange/butt welding end
Control pressure	Intern or external
Pressure range	25 MPa, 32 MPa, 50 MPa; higher on request
Nominal diameter	DN10 – DN150 (bigger on request)
Solenoid valves	2/2 control valve DN3/PN 320 24V DC, or cascade of solenoid valves
Filtration	Control pressure with integrated 25my filter

Data for reference only and subject of technical changes.